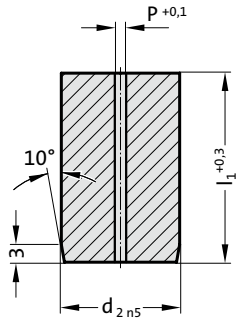


MATRIX WITHOUT SHOULDER, BLANK, AUTOMOTIVE STANDARD



2605.



2605. Matrix without shoulder, blank, Automotive Standard

d ₂ / Order No	P	l ₁ / (Order Code character)	13 (A)	16 (B)	20 (C)	22 (D)	25 (E)	28 (F)	30 (G)	32 (H)	35 (J)	40 (K)
10 / (4)	0.8		●	●	●	●	●	●	●	●	●	
13 / (5)	0.8		●	●	●	●	●	●	●	●	●	
16 / (6)	1.5				●	●	●	●	●	●	●	
20 / (7)	1.5				●	●	●	●	●	●	●	
22 / (8)	1.5				●	●	●	●	●	●	●	
25 / (9)	1.5				●	●	●	●	●	●	●	
32 / (10)	1.5				●	●	●	●	●	●	●	
38 / (11)	1.5				●	●	●	●	●	●	●	●
40 / (12)	1.5					●	●	●	●	●	●	●
45 / (13)	1.5					●	●	●	●	●	●	●
50 / (14)	1.5					●	●	●	●	●	●	●
56 / (15)	1.5					●	●	●	●	●	●	●
63 / (16)	1.5					●	●	●	●	●	●	●
71 / (17)	1.5					●	●	●	●	●	●	●
76 / (18)	1.5						●	●	●	●	●	●
85 / (19)	1.5						●	●	●	●	●	●
90 / (20)	1.5						●	●	●	●	●	●
100 / (21)	1.5						●	●	●	●	●	●

Material:

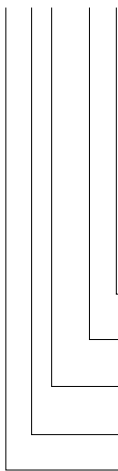
HSS
Hardness 62 ± 2 HRC

Execution:

Diameter d₂ and face surfaces ground.
Diameter P is a bored pilot hole for wire EDM.
Special dimensions on request.

Ordering Code (example):

2605.10F



Length: l
28 mm
Diameter: d₂
32 mm
Type: without shoulder
Automotive Standard
Execution:
Blank (pilot hole bore)
Matrix

Order Code character
= (F)
Order No
= (10)
Order No
= (5)
Order No
= (0)
= 26