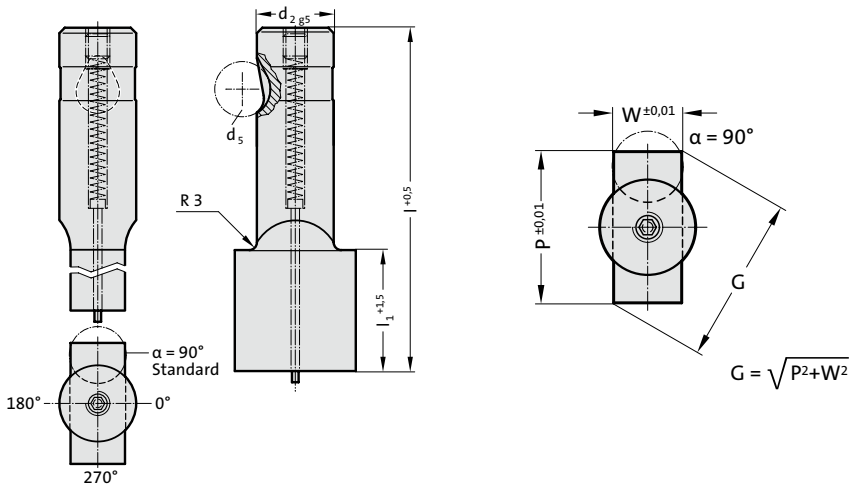


BALL-LOCK PUNCH, PUNCH LARGER THAN SHAFT, RECTANGULAR, WITH EJECTOR PIN, HEAVY DUTY



2735.



2735. Ball-Lock punch, punch larger than shaft, rectangular, with ejector pin, heavy duty

d ₂ / Order No	d ₅	W _{min}	G _{max}	l ₁ / Order No	l (Order Code character)	80 (E)	90 (F)	100 (G)
13 / (3)	12	5	32	19 (2) 30 (4)		●	●	●
16 / (4)	12	6.5	38	19 (2) 30 (4)		●	●	●
20 / (5)	12	8	40	19 (2) 30 (4)		●	●	●
25 / (6)	12	10	44	19 (2) 30 (4)		●	●	●
32 / (7)	12	11.5	50	19 (2) 30 (4)		●	●	●
40 / (9)	12	14	56	19 (2) 30 (4)		●	●	●

Material:

HSS
Hardness 62 ± 2 HRC

Execution:

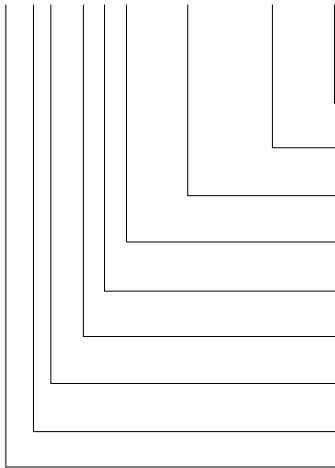
Shaft and punch shape fine ground.
Special dimensions on request.

Note:

With kerf ≤ 0.04 mm, FIBRO rounds off sharp edges if the punch and piercing die bush are ordered together. This reduces the fitting time and the risk of an edge break during operation.

Ordering Code (example):

2735.4F4.1420.1150.B



Angle: 90°	Order Code character = (B)
Shape: rectangular, Width W W = 11,5 mm	= 1150
Shape: rectangular, Length P P = 14,2 mm	= 1420
Punch cutting length: l₁ 30 mm	Order No = (4)
Length: l 90 mm	Order Code character = (F)
Diameter: d₂ 16 mm	Order No = (4)
Type: punch larger, heavy	Order No = (5)
Execution: rectangular	Order No = (3)
Punch: with ejector pin	= 27