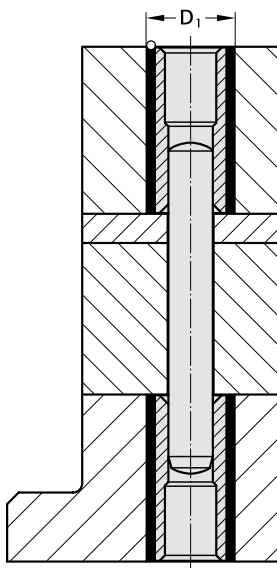
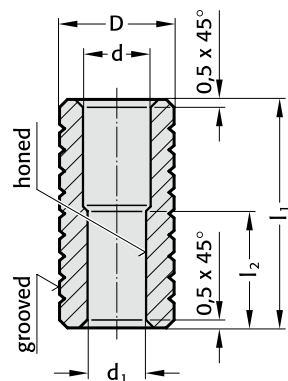


# LINER BUSH FOR DOWEL PIN, FOR BONDING



265.1.



### Description:

Dowel liner bushes are used where precisely positioned, unhardened parts are often changed or must be replaced, e.g. in precision tool construction.

### Material:

WS  
Hardness 54 ± 2 HRC

### Epoxy-Bonding:

The jig-ground pin holes of the hardened matrix are joined with the dowel liner bush by means of a dowel pin 235.1. Retainer holes for dowel liner bushes should be approximately 2 mm larger in diameter than the bush O.D. – a coarse finish is desirable. Following exact positioning/aligning, FIBROLIT® ZWO or FIBROFIX® SECHS is used for bonding.

### 265.1. Liner bush for dowel pin, for bonding

d <sub>1</sub>	d	D	D <sub>1</sub>	l <sub>1</sub>	l <sub>2</sub>
6	7	10	12	25	12
8	9	12	14	30	16
10	11	16	18	36	20

### Ordering Code (example):

#### 1 Dowel Liner Bush – only –

Dowel Liner Bush	=	265.
Material WS	=	1.
d <sub>1</sub> = ø 8,0 mm	=	0800.
Quantity – 1	=	1
Order No	=	265.1.0800.1

### Ordering Code (example):

#### 1 Dowel Liner Bush + 1 Dowel pin

Dowel Liner Bush	=	265.
Material WS	=	1.
d <sub>1</sub> = ø 8,0 mm	=	0800.
Quantity – 1	=	1.
Dowel length = 40 mm	=	040
Order No	=	265.1.0800.1.040

### Ordering Code (example):

#### 2 Dowel Liner Bushes + 1 Dowel pin

Dowel Liner Bush	=	265.
Material WS	=	1.
d <sub>1</sub> = ø 8,0 mm	=	0800.
Quantity – 2	=	5.
Dowel length = 50 mm	=	050
Order No	=	265.1.0800.2.050